

Chart 1: Attrition in Finland (Cases include Minors)

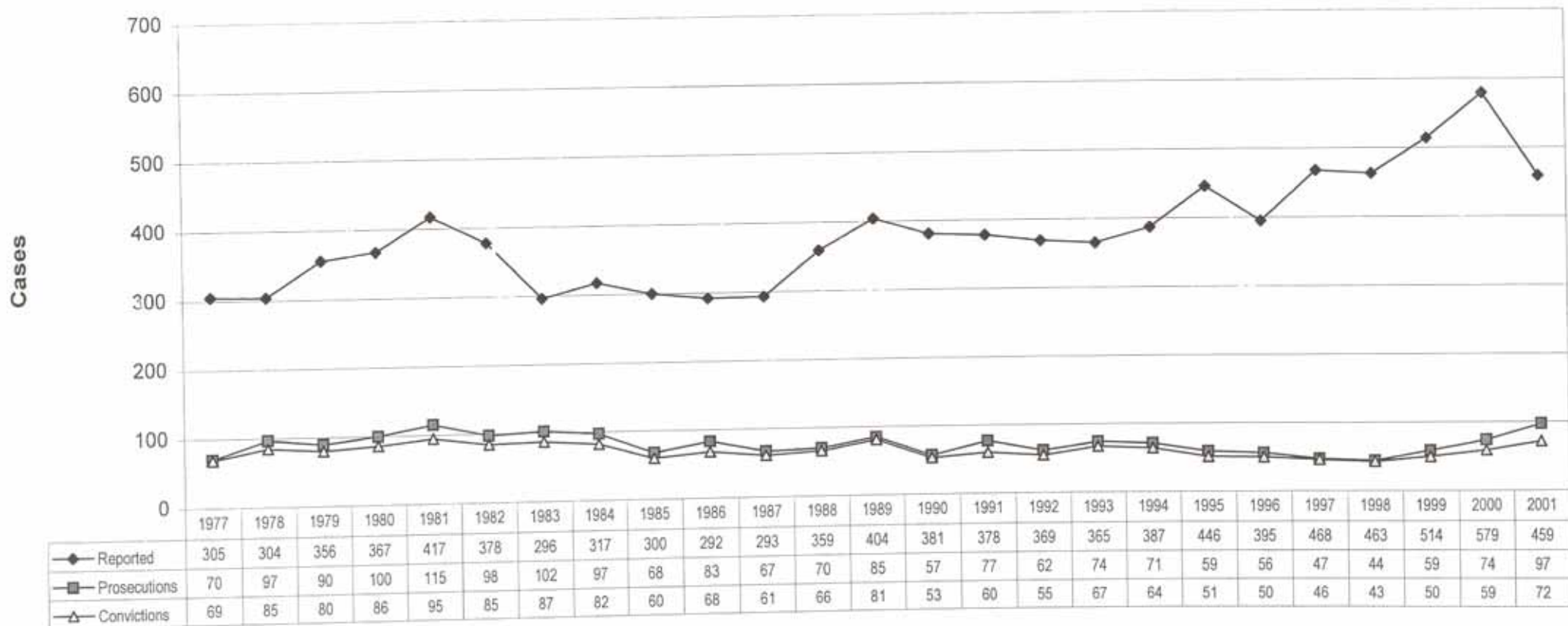


Chart 2: Attrition in Germany (Cases include Minors)

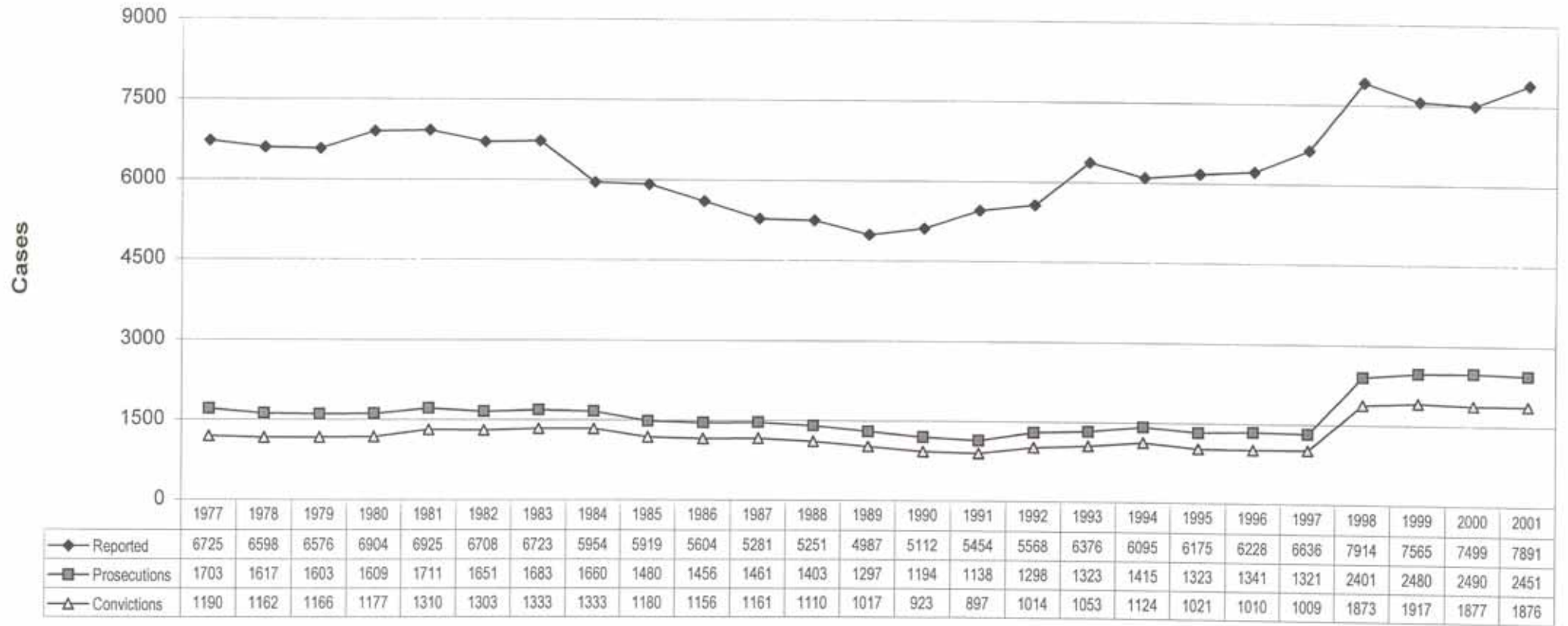


Chart 3: Attrition in Ireland (Cases include Minors)

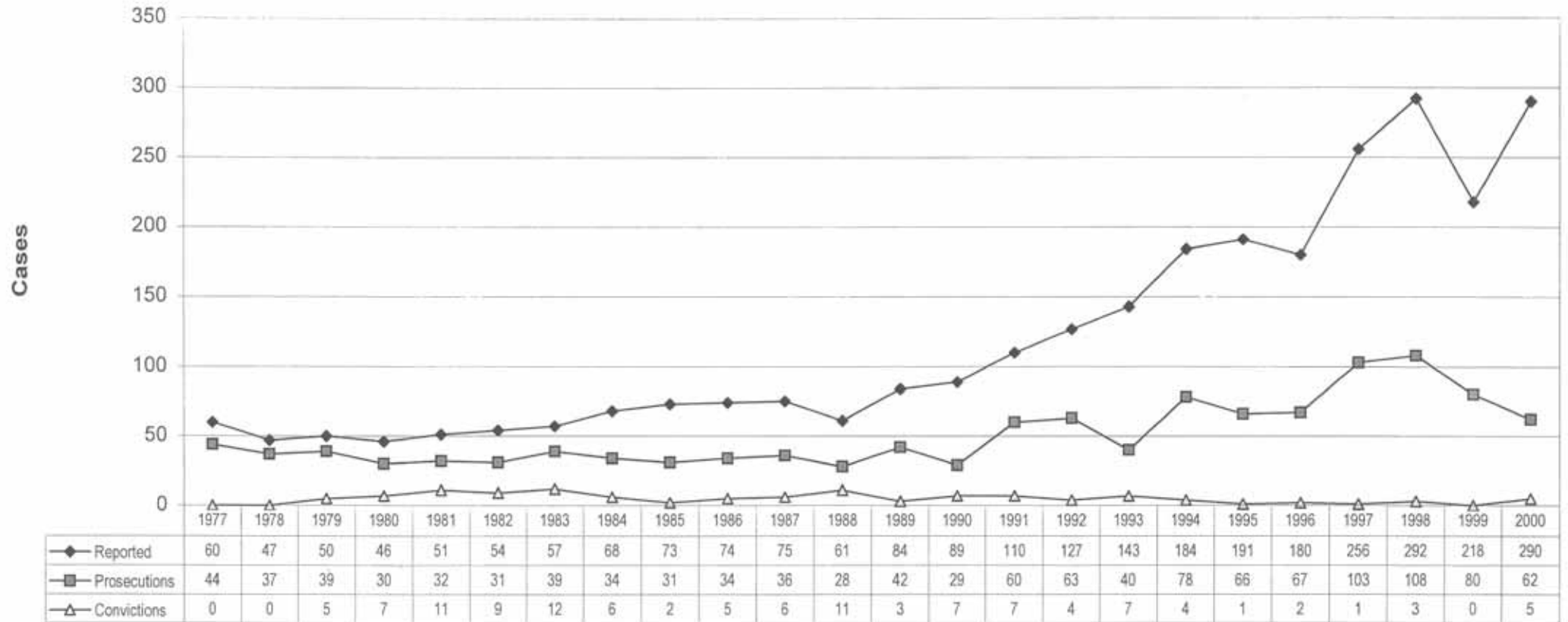


Chart 4: Attrition in Scotland (Cases include Minors)

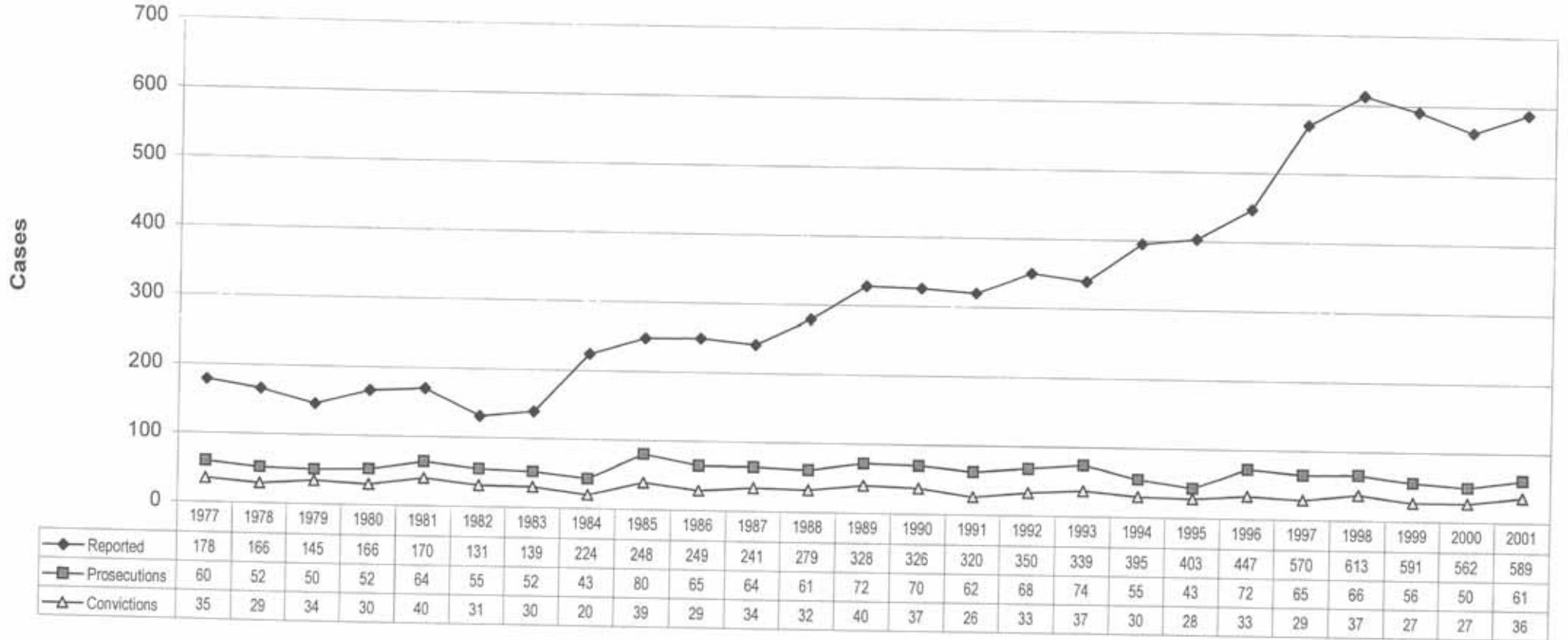


Chart 5: Attrition in Sweden (Cases include Minors)

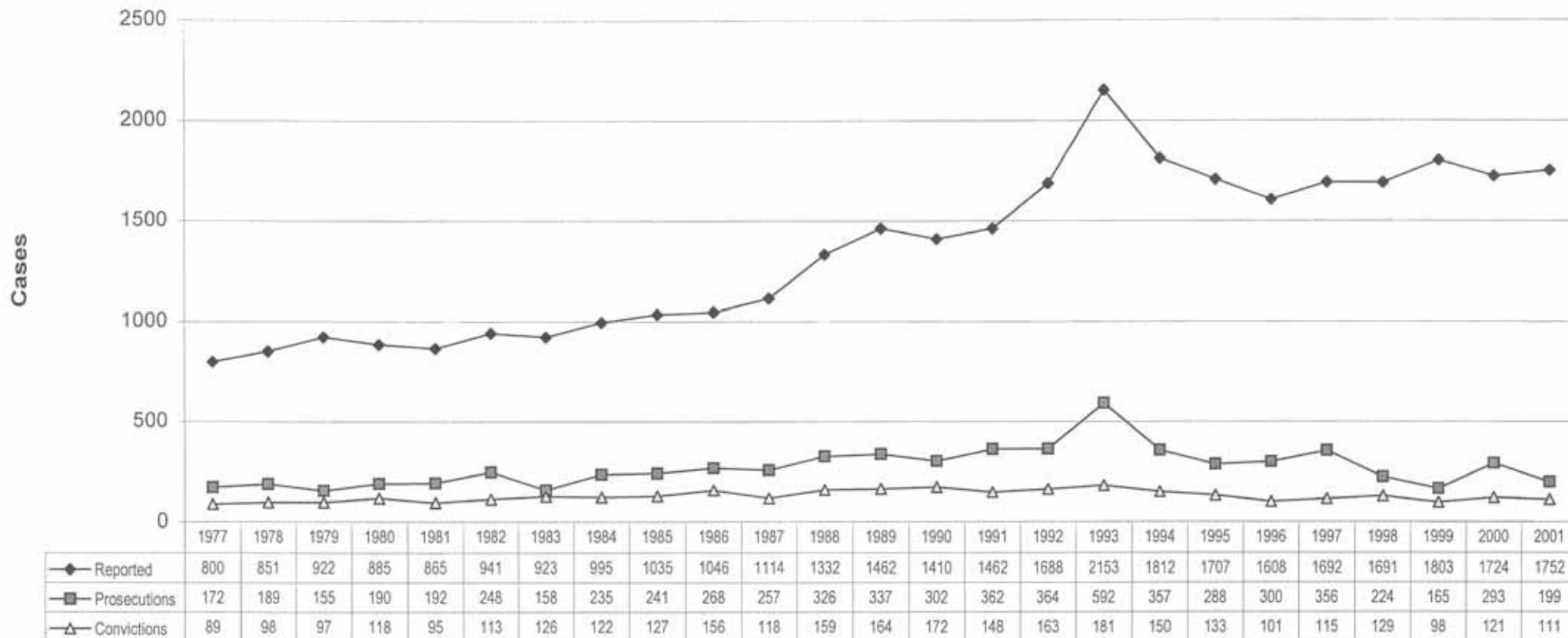


Chart 6: Attrition in Hungary (Cases include Minors)

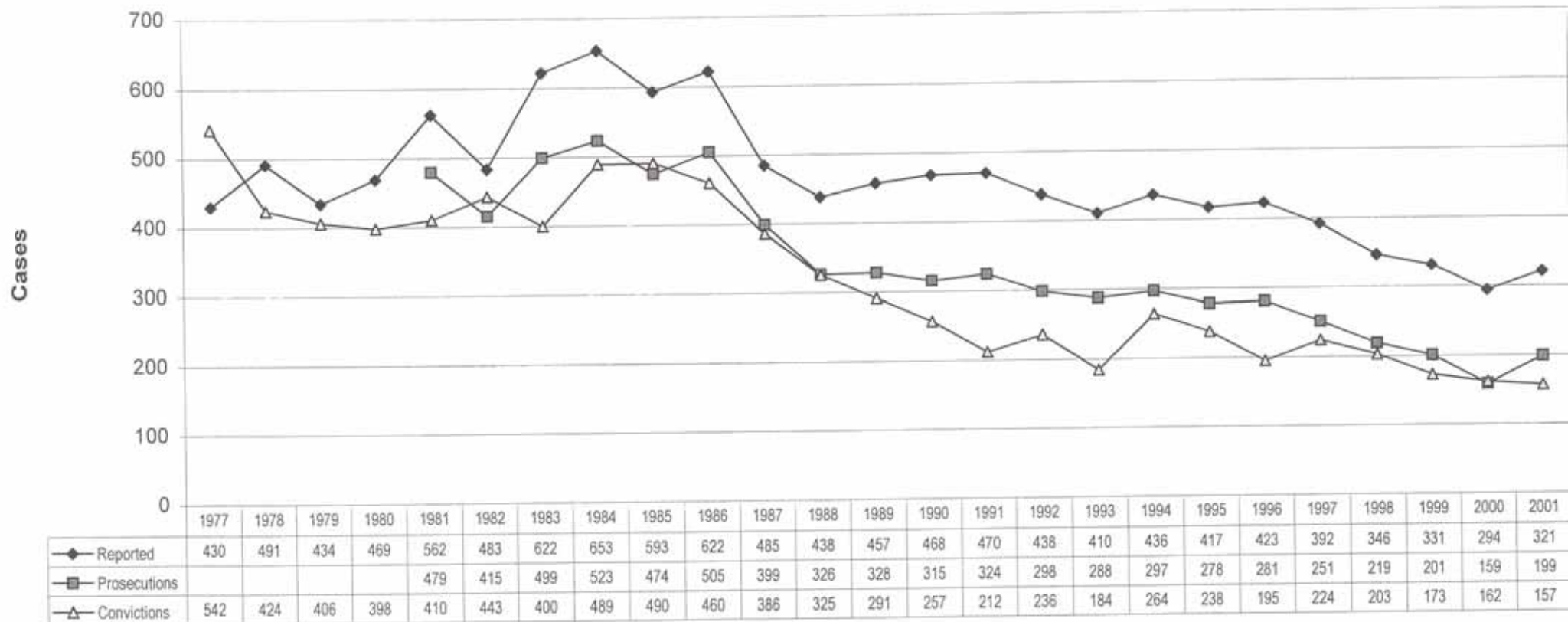


Chart 7: Attrition in Slovenia

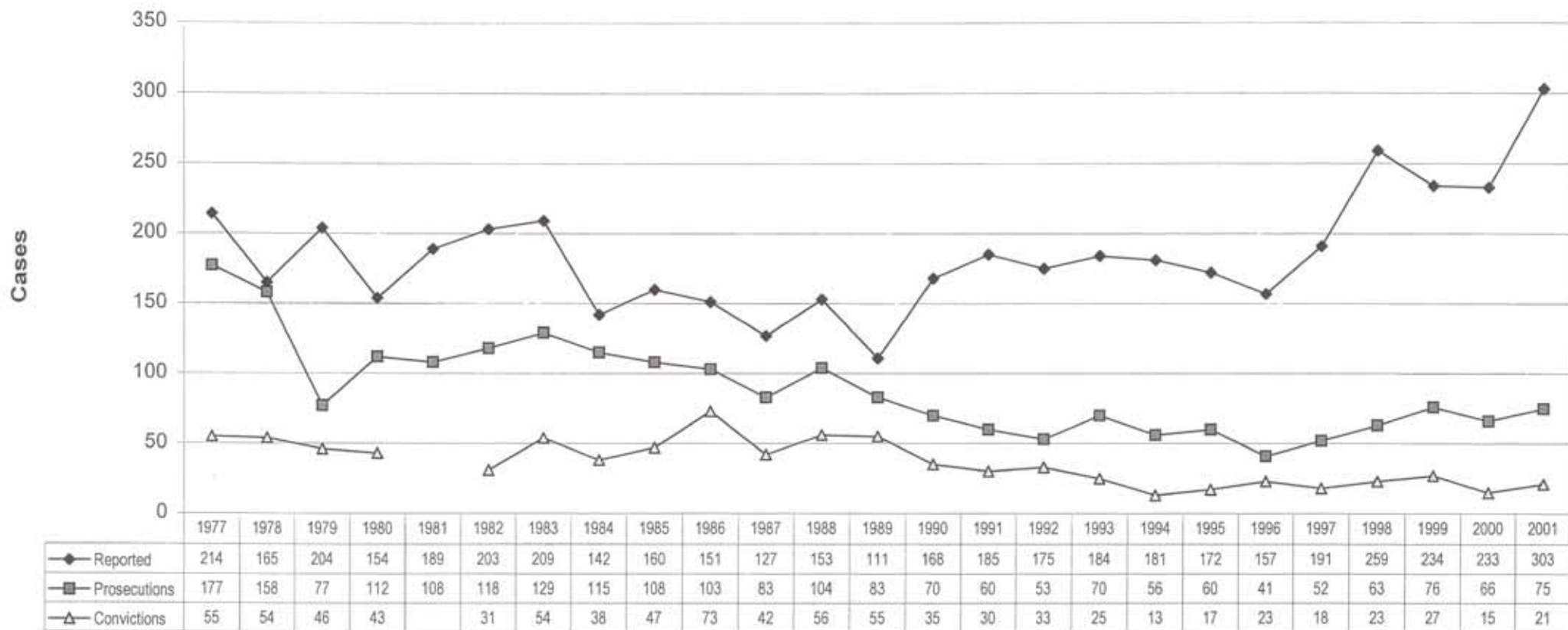


Chart 8: Attrition in England & Wales (Cases include Minors)

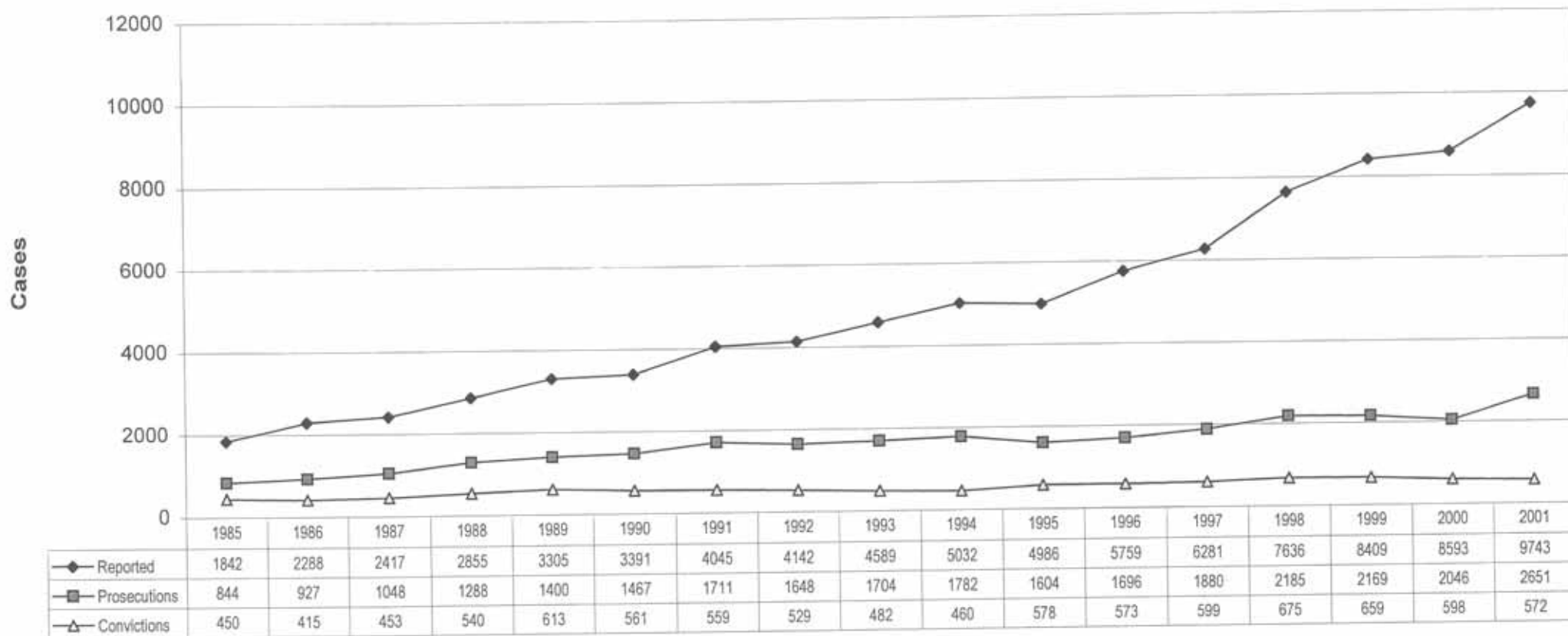




Chart 9: Attrition in Austria (Cases include Minors)

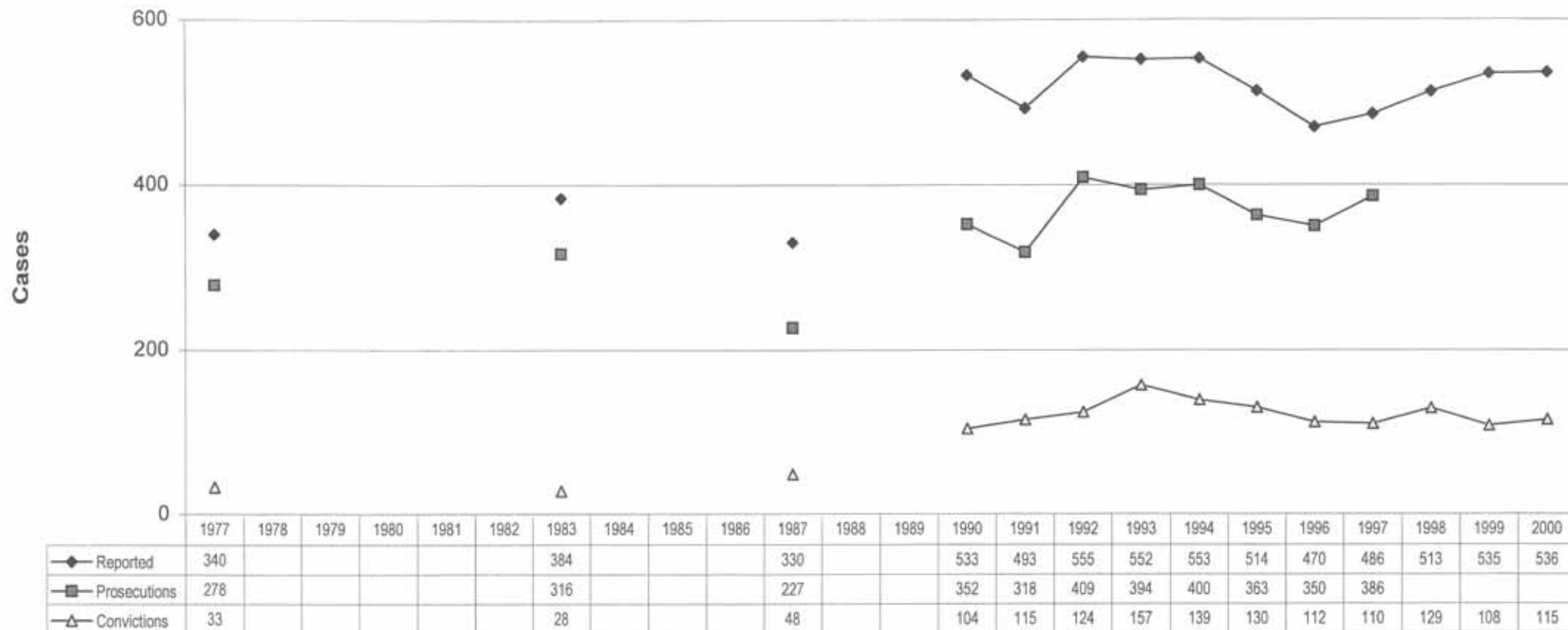


Chart 10: Attrition in the Czech Republic (cases include minors)

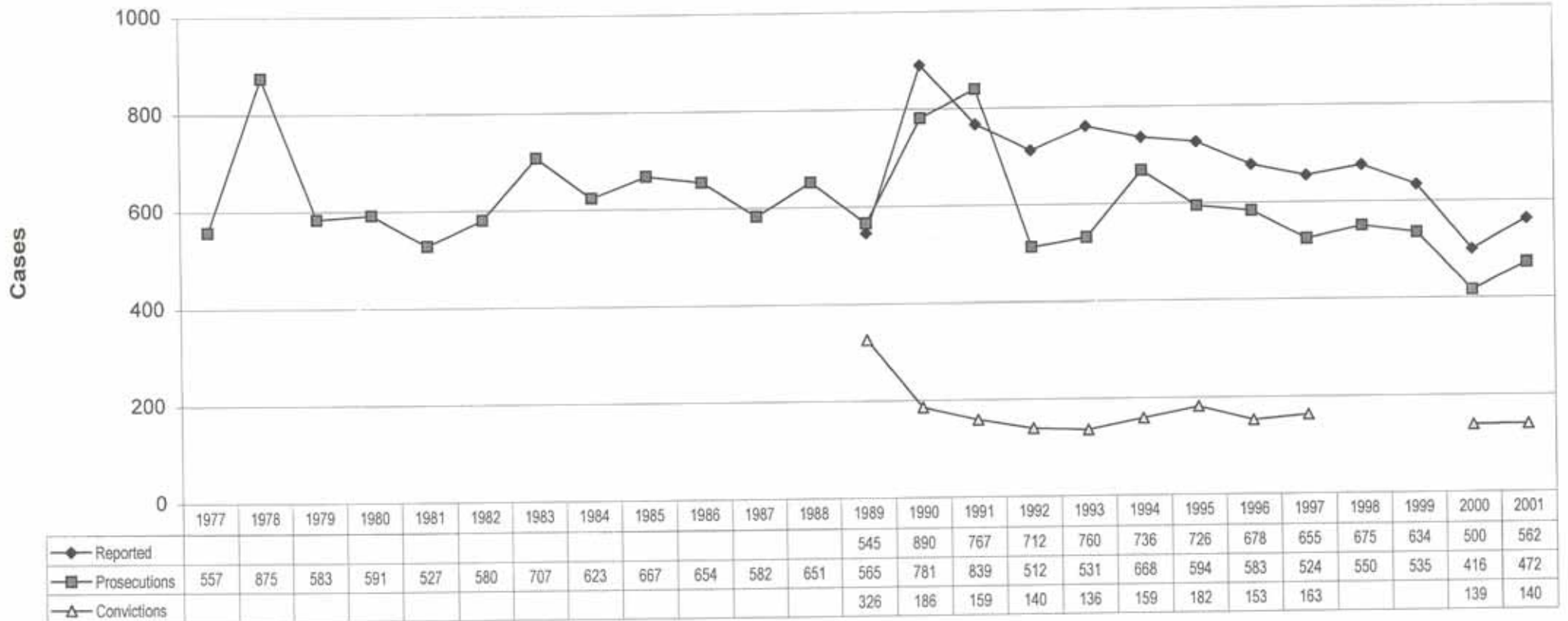


Chart 11: Attrition in Iceland

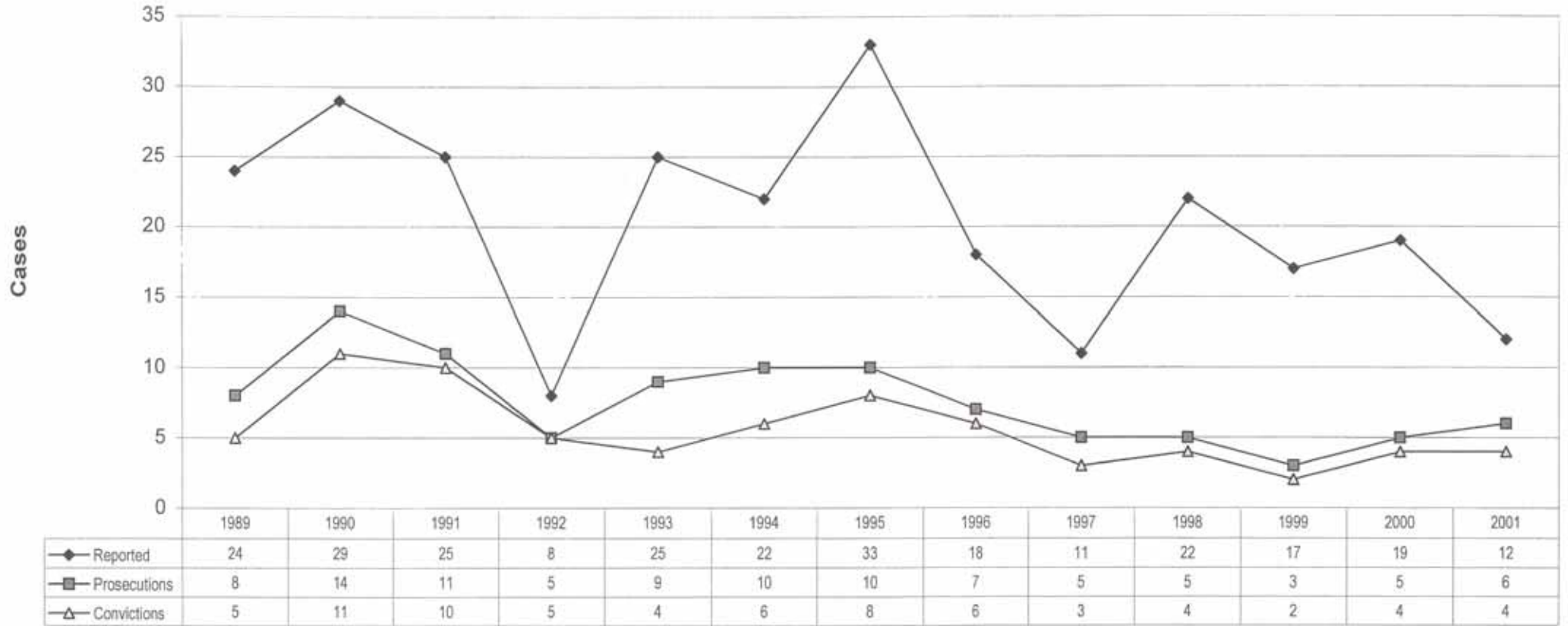


Chart 12: Attrition in Latvia (Cases include Minors)

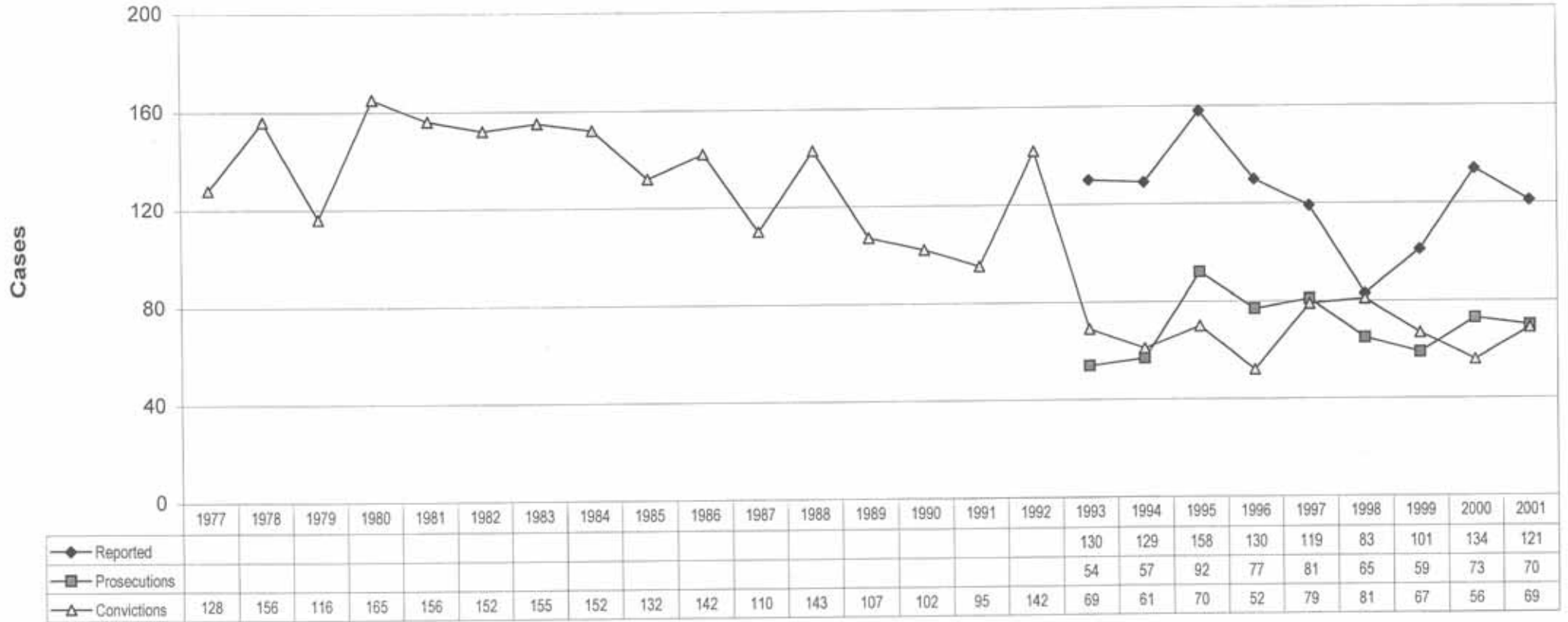


Chart 13: Attrition in Poland

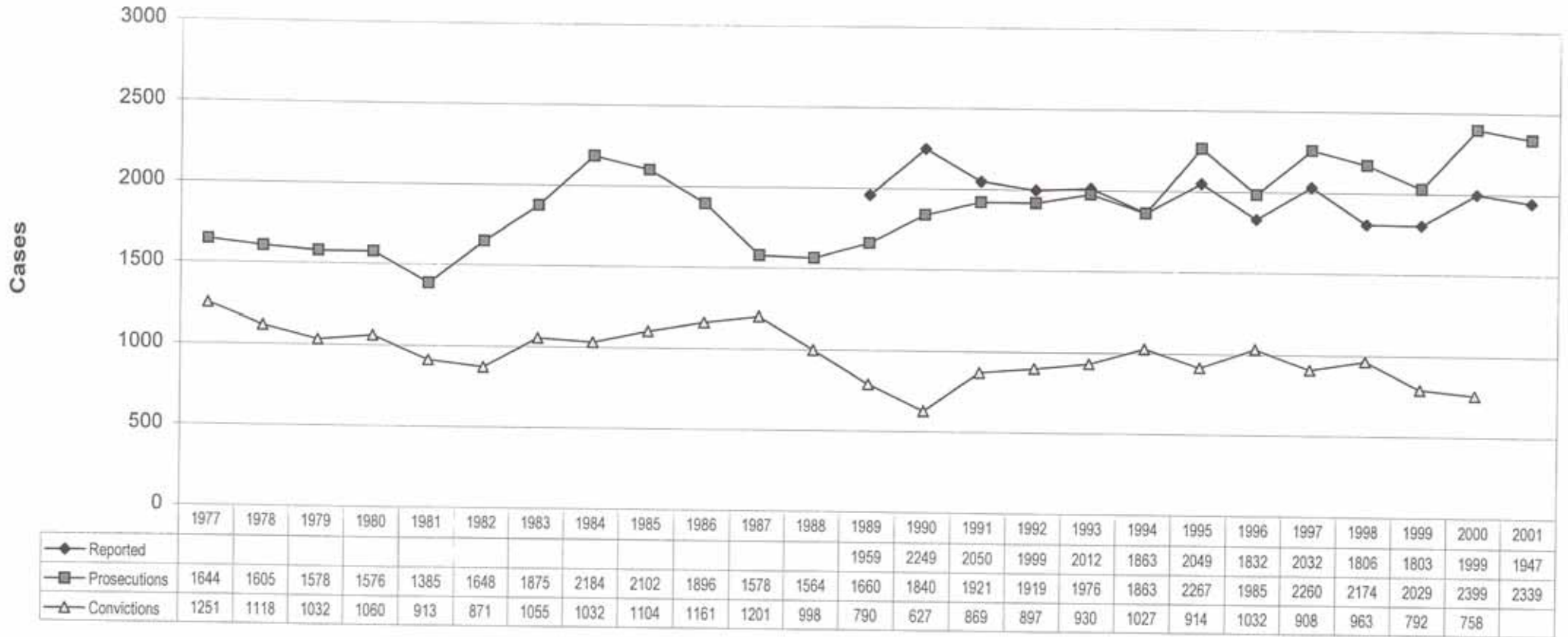


Chart 14: Attrition in Portugal (Cases include Minors)

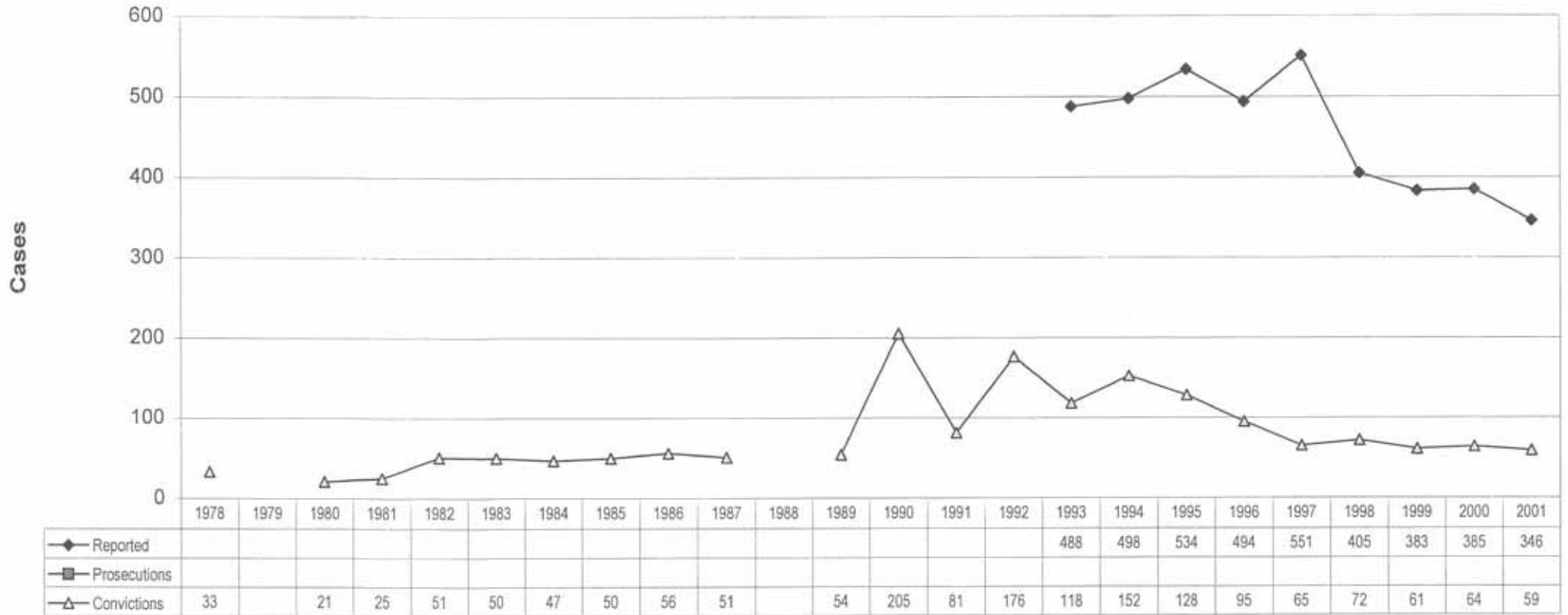


Chart 15: Attrition in Switzerland (Cases include Minors)

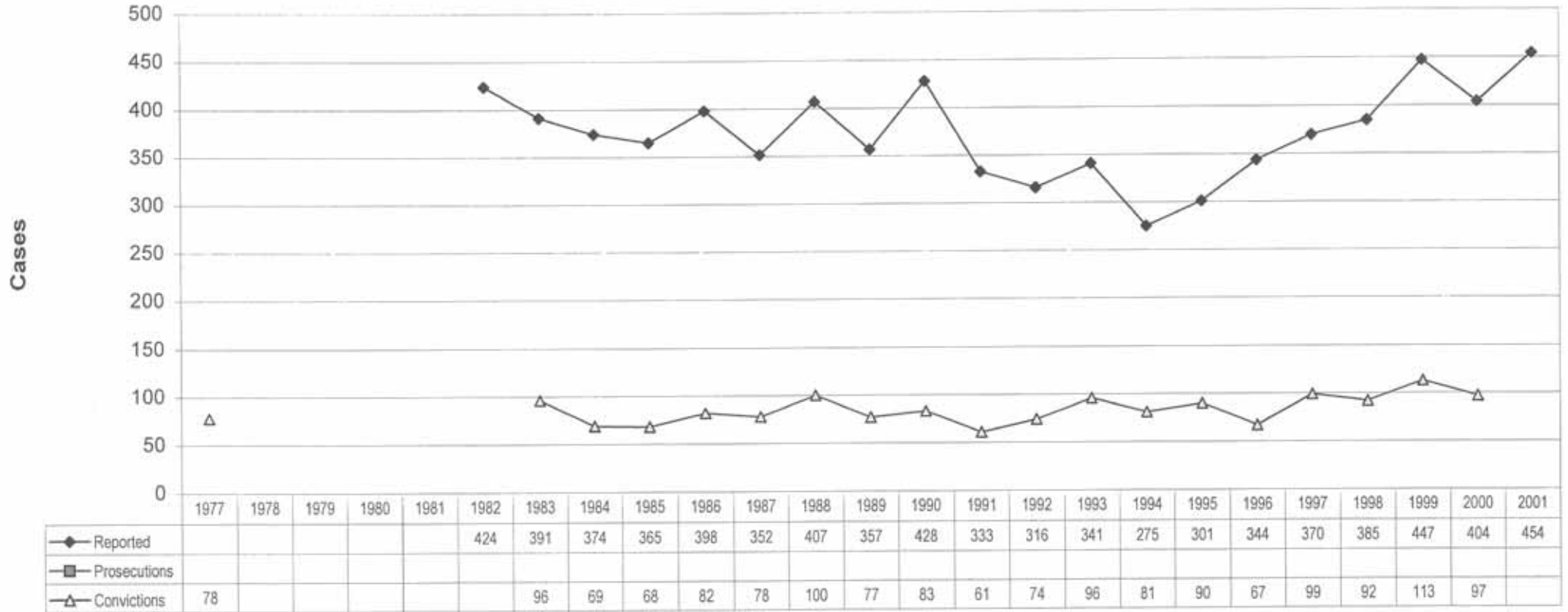


Chart 16: Attrition in Belgium

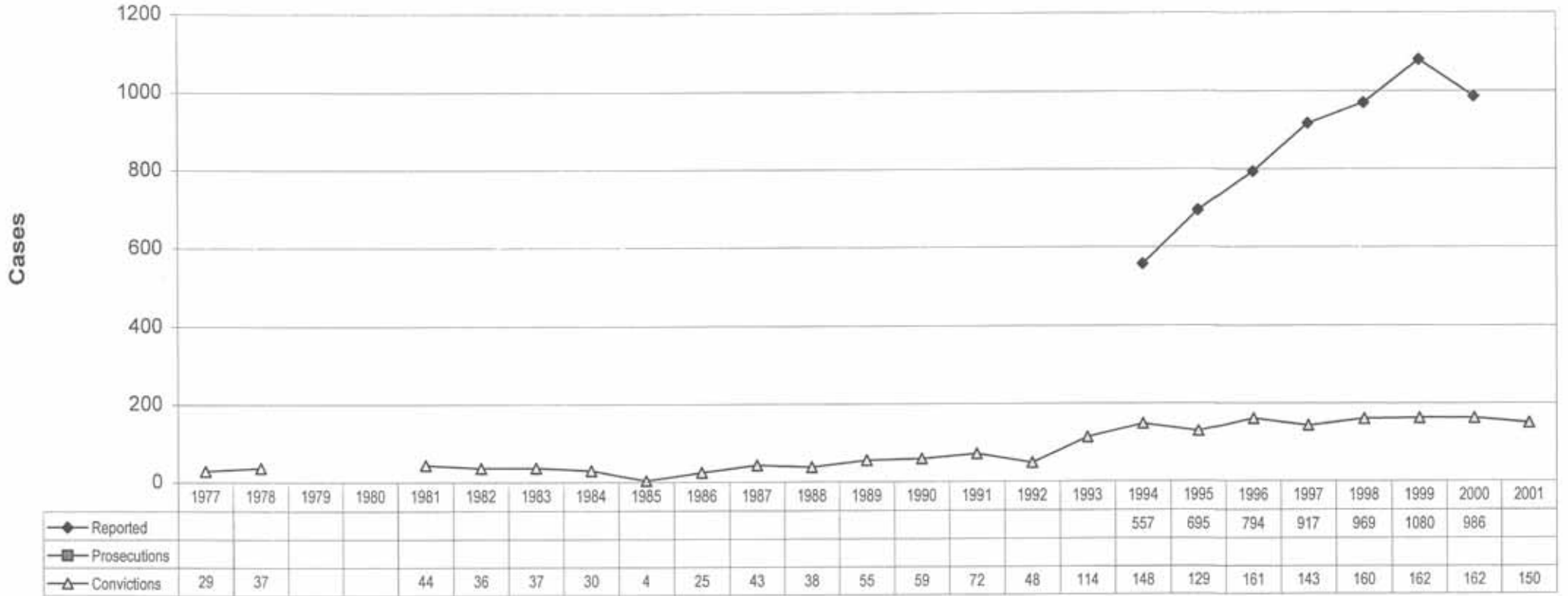






Chart 18: Attrition in France (Convictions include serious sexual assaults)

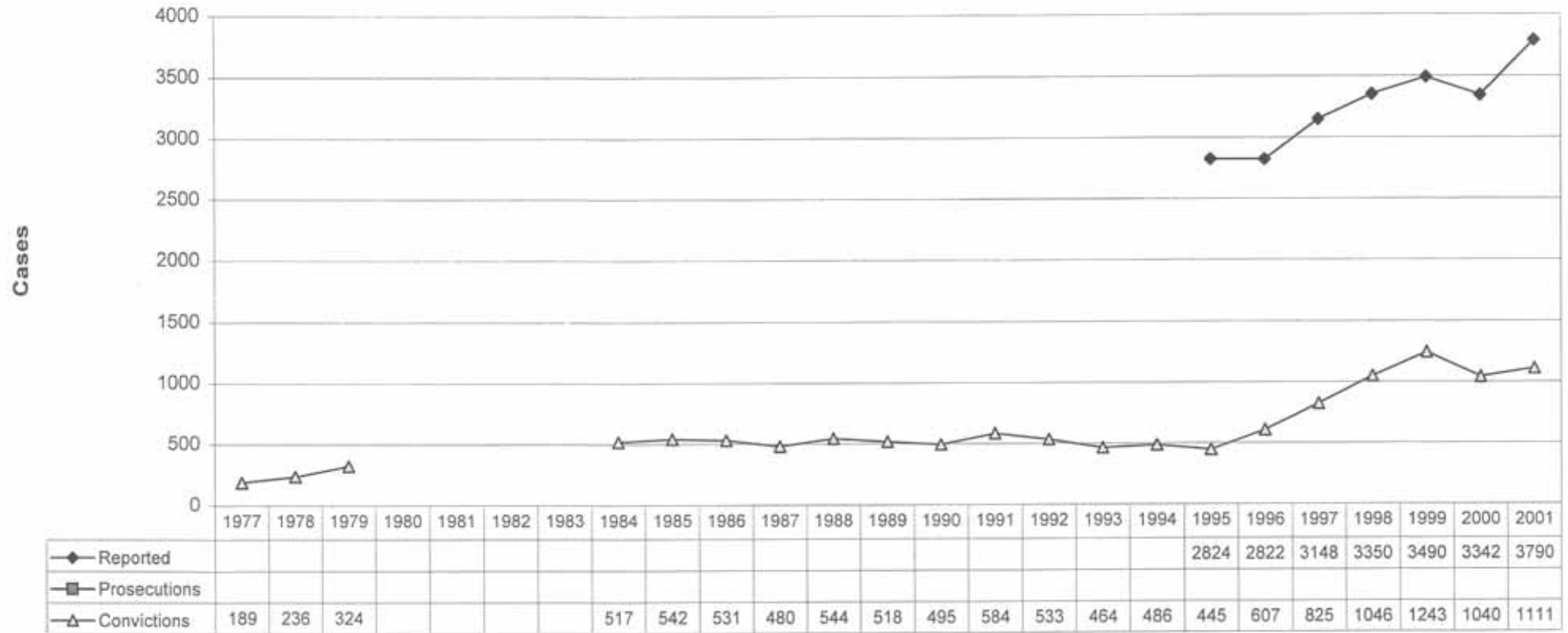


Chart 19: Attrition in Greece (Cases include Minors)

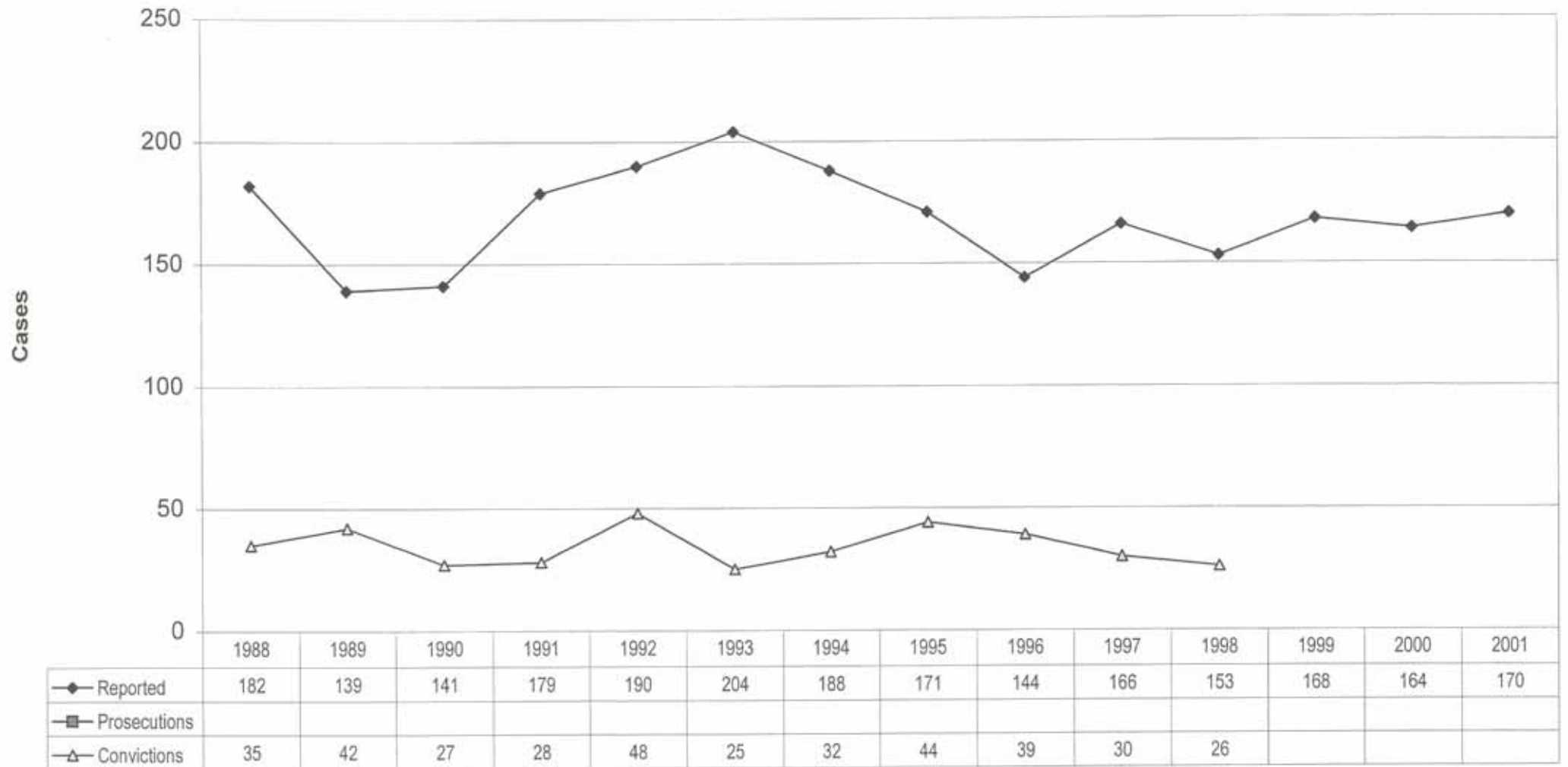


Chart 20: Attrition in Romania

